

**Projector Lift**

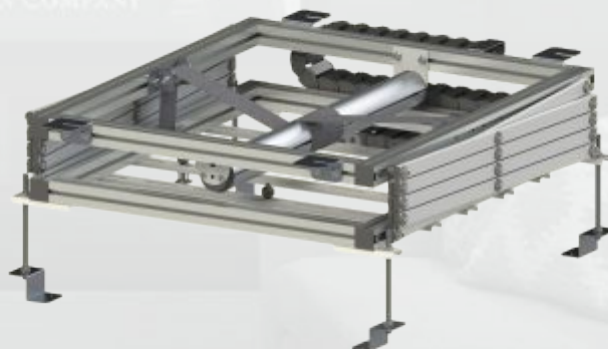
**1 Meter Drop**

**Model No.**

**AX201H**

**Product Details**

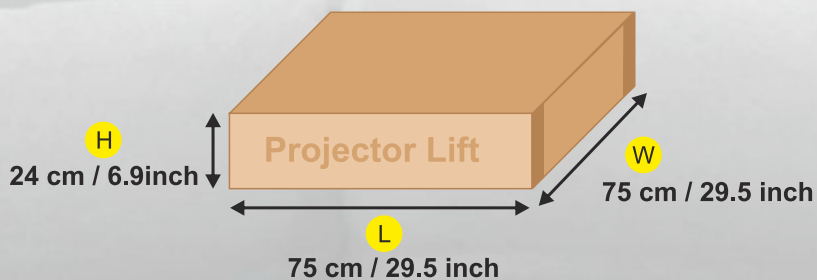
- Aluminum Scissor Lift
- 1 Meter Drop
- Tubular Motor
- 50 kg Weight Lifting Capacity with Bottom Sheet
- Cable Track For Better Cable Management
- Adjustable Clamps For Lower Plate



**1 YEAR  
WARRANTY**

**Lift Box Dimension**

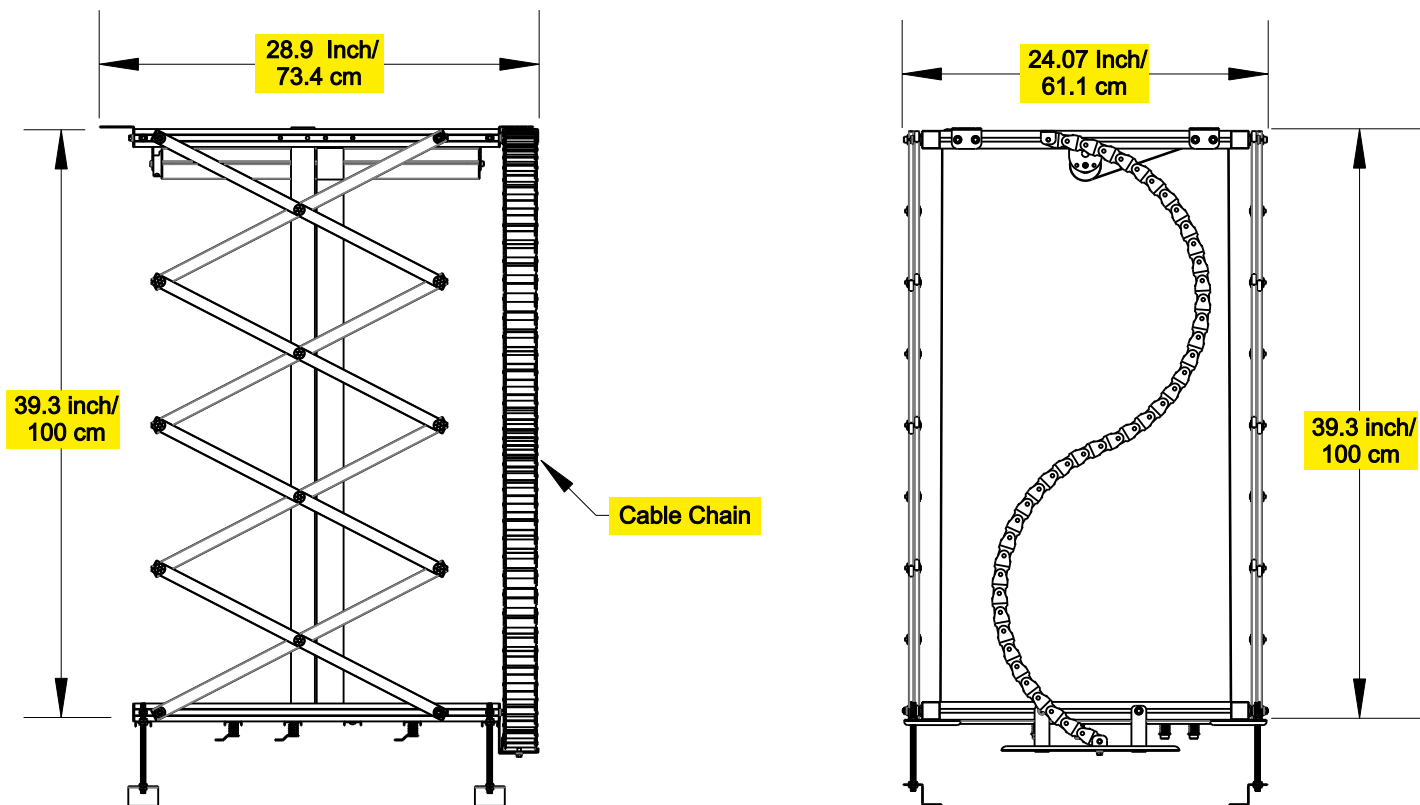
**Weight 16kg**



**Projector Lift**

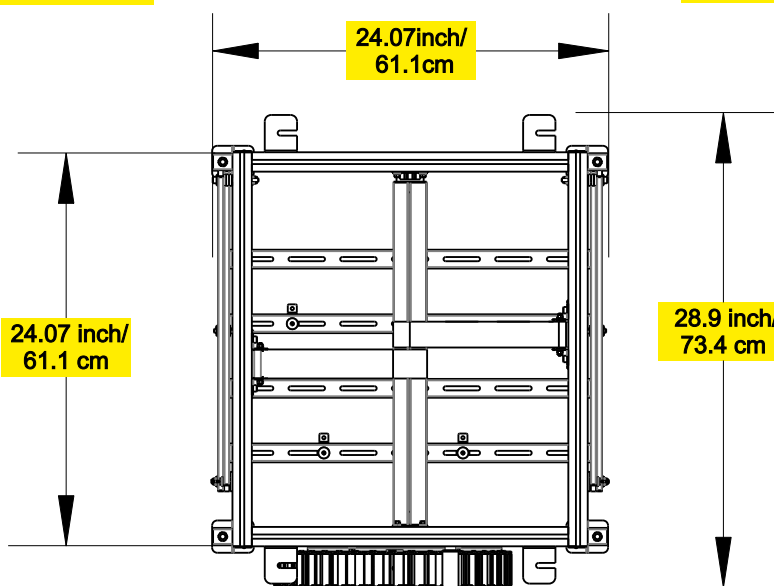
**1 Meter Drop**

**Model No. AX201H**



**SIDE VIEW**

**BACK VIEW**



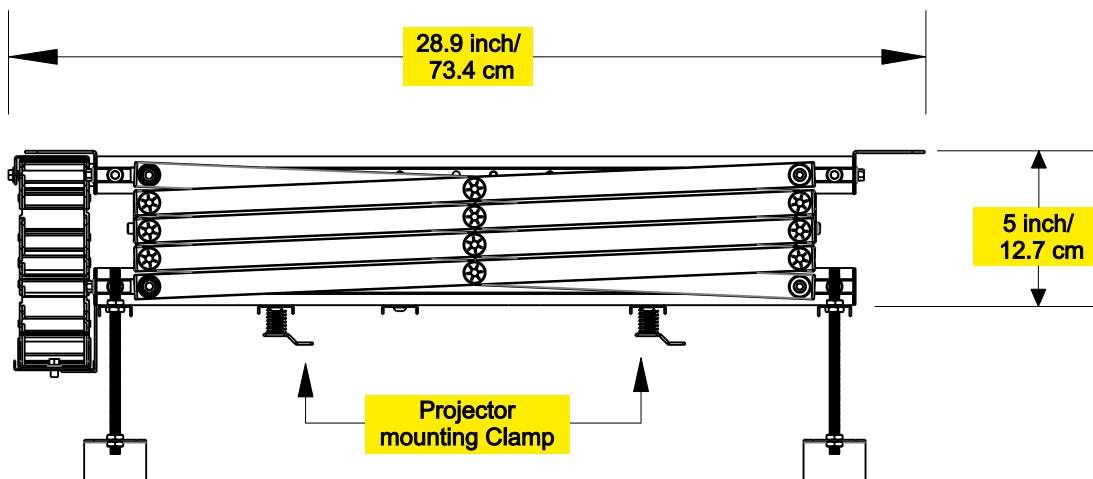
**TOP VIEW**

**Projector Lift**

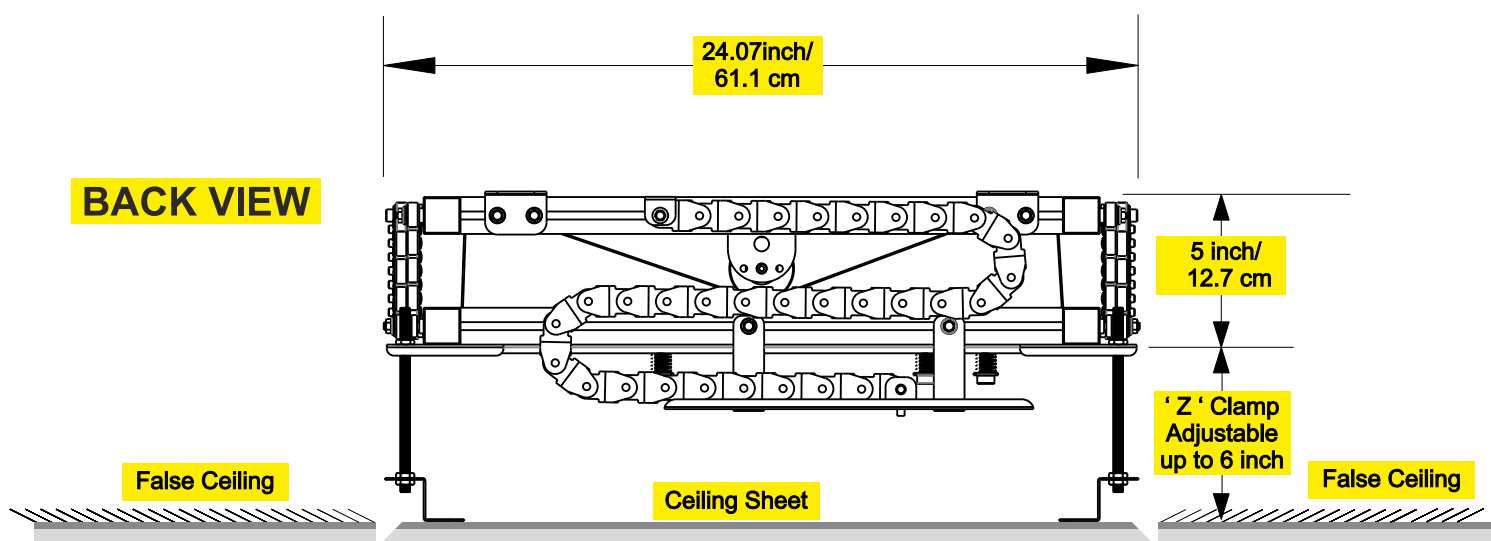
**1 Meter Drop**

**Model No. AX201H**

**SIDE VIEW**



**BACK VIEW**



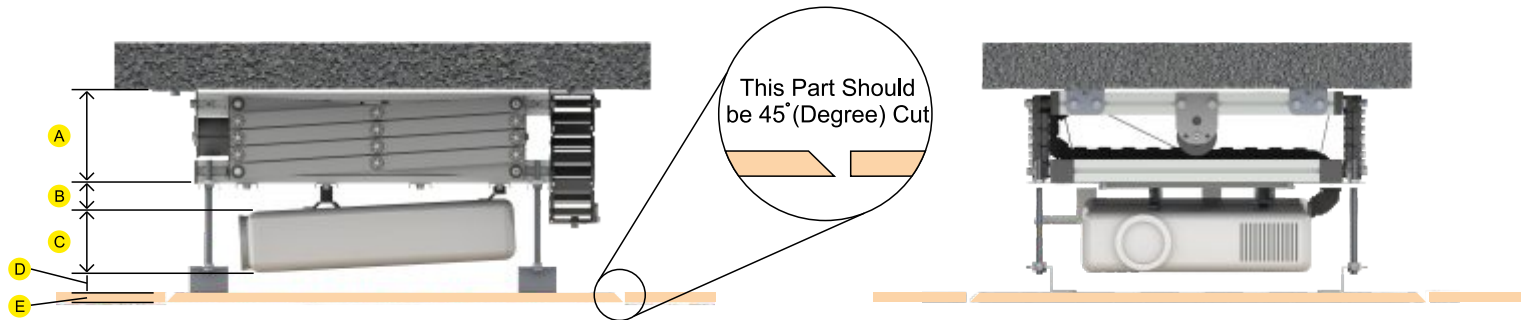
**Note : Ceiling Sheet is not included in lift**

## Projector Lift

## Projector Lift Installation ( Page - 1 )

How to calculate Gap between RCC Ceiling to False Ceiling.

### For Fixed Lens Projector



A = Lift Height

B = Projector Tilting Space

C = Projector Height

D = Gap Between Projector to Bottom Sheet

E = Bottom Sheet thickness

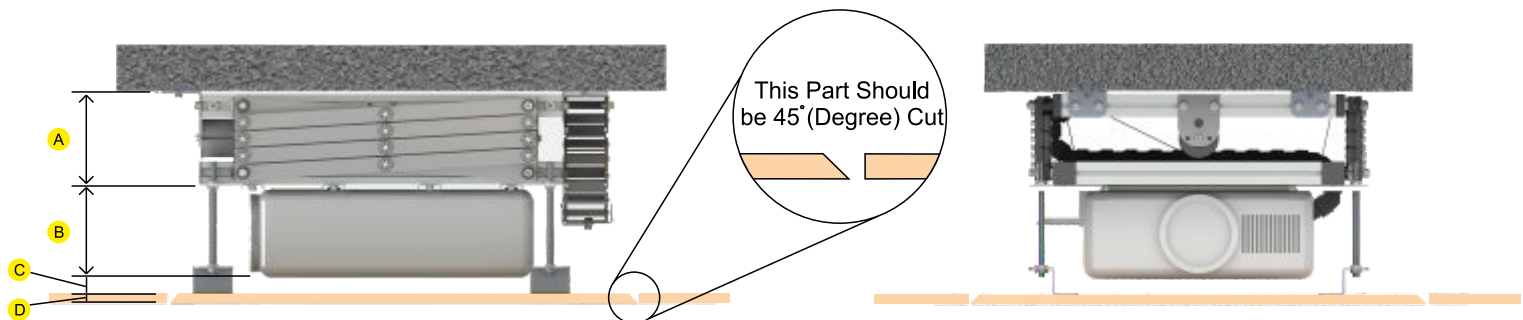
$$A ( \underline{5}^\circ ) \text{ Inch} + B ( \underline{\quad}^* ) \text{ Inch} + C ( \underline{\quad} ) \text{ Inch} + D ( \underline{\quad}^\# ) \text{ Inch} + E ( \underline{\quad} ) \text{ Inch} = ( \underline{\quad} ) \text{ inch}$$

● = AX201H Height

\* = Approx 1 to 1.5 inch

# = Approx 0.5 to 1 inch

### For Lens Shifting Projector



A = Lift Height

B = Projector Height

C = Space

D = Bottom Sheet thickness

$$A ( \underline{5}^\circ ) \text{ Inch} + B ( \underline{\quad} ) \text{ Inch} + C ( \underline{\quad}^* ) \text{ Inch} + D ( \underline{\quad}^\# ) \text{ Inch} = ( \underline{\quad} ) \text{ inch}$$

● = AX201H Height

\* = Approx 1 to 1.5 inch

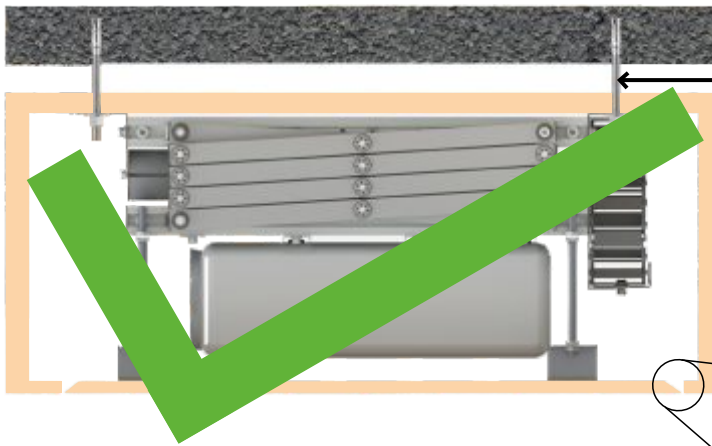
# = Approx 0.5 to 1 inch

## Projector Lift

## Projector Lift Installation ( Page - 2 )

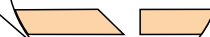
If you are Installing Lift in Wooden Box Please Look into this Drawing

RCC Ceiling



**Fix Full thread Stud to RCC and fix Projector Lift with it.**

This Part Should be 45 (Degree) Cut



RCC Ceiling



**Projector Lift Fixed by wooden Screw.**

This Part Should be 45 (Degree) Cut



**It Cause High Noise**

## Projector Lift

## Projector Lift Installation ( Page - 3 )

**If not use Cable chain it cause Damage Lift by cable mess, in this case we will not Support any Warranty.**



**For better cable management must use cable chain**

**For Model AX 201 H Bottom Sheet Cutout Minimum size 28 inch x 28 inch ideal size 30 inch x 30 inch**

